

ULTIMATE SOLUTIONS, INC.

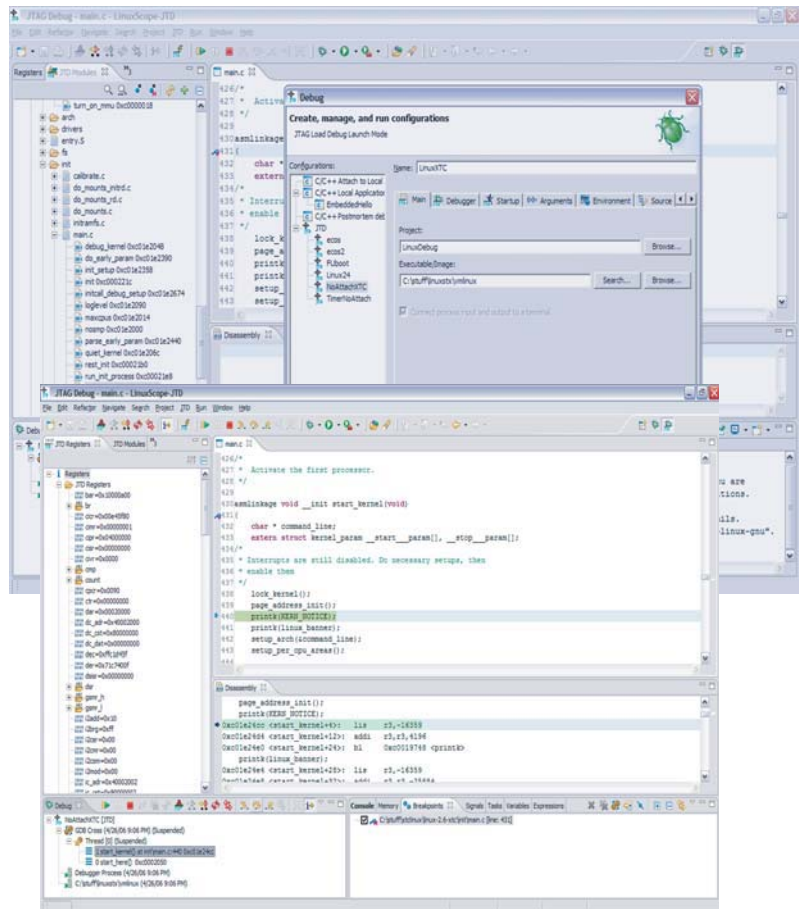
LINUX SCOPE -JTD JTAG TARGET DEBUGGER



LinuxScope-JTD™ (JTAG Target Debugger) is a debugger for the Eclipse™ IDE that has been optimized for use with Abatron's BDI2000/BDI3000 BDM/JTAG probe. LinuxScope-JTD™ leverages the capabilities of the BDI probe, which already supports a wide range of embedded CPUs to provide a complete software debugging solution for the Linux kernel. LinuxScope also provides users with the ability to program a wide range of common flash devices. Because it is built on Eclipse™, it is easy to add in a user defined tool chain to support application building and debugging.

Features

- Designed to debug BDM/JTAG targets with the Abatron BDI2000/BDI3000 BDM/JTAG Probe
- Integrated flash utility to simplify flash burning process
- Allows creation of custom scripts to perform special target operations
- Designed to allow Linux kernel debugging
- Easy mechanism to modify and view hardware registers
- Enhanced MI interface adds hardware breakpoint awareness into Eclipse™ and tracking of modules
- Quick setup allows you to be up and debugging your target in minutes
- Eclipse™ based IDE and plug-in available (allows you to standardize your tools into one platform)
- Standard debugging features:
View/Modify memory, view disassembly, track watch points, view variable, and view stack
- Plug-in updates bringing even more features and enhancements



CONTACT USI FOR MORE INFORMATION ON THIS PRODUCT:

Ultimate Solutions, Inc. • 10 Clever Drive • Tewksbury, MA 01876-1580 • USA

Toll Free: 866.455.3383 • Fax: 978-926-3091

Email: info@ultsol.com • Web: www.ultsol.com